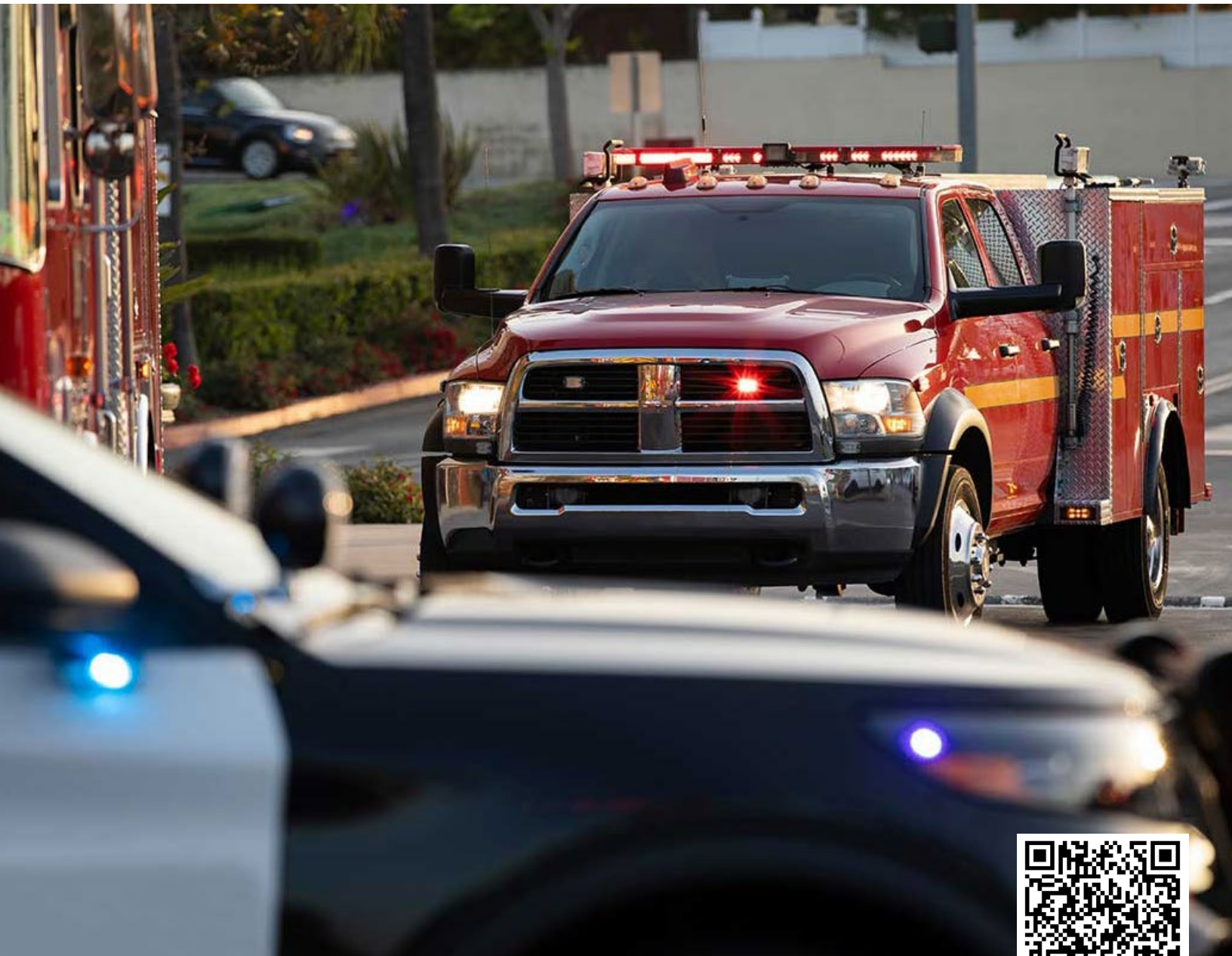




OPTIFUSE FOR **EMERGENCY VEHICLE UPFITTING**

Circuit protection for the most challenging applications



WWW.OPTIFUSE.COM

OPTIFUSE FOR EMERGENCY VEHICLE UPFITTING

Circuit protection for the most challenging applications



HIGH AMPERAGE CIRCUIT BREAKERS

SE IP₆₇
J1171



Waterproof (IP 67) and Ignition Protected
25A-300A
Automatic and Manual Reset
Ask us about our new 153-SS model with stainless steel hardware

10-32 STUD CIRCUIT BREAKERS

SE IP₆₃
J1171



Ignition Protected
Metal and IP63 Plastic body
Automatic and Manual Reset
Amperage color coding available
Three bracket styles
Insulating cover available

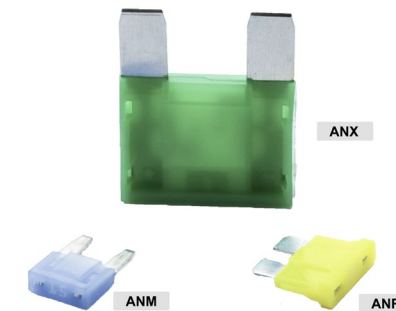
OPTIFUSE FOR EMERGENCY VEHICLE UPFITTING

Circuit protection for the most challenging applications



BLADE FUSES

c_{RU} US



High Voltage available: 58VDC, 80VDC and 250VAC
With LED indicator option
All sizes available: MICRO3 Style | MICRO2 Style | Mini Style - Low Profile | Mini Style | Regular (ATO/ATC Style) | Maxi Style
Designed with corrosion resistant materials

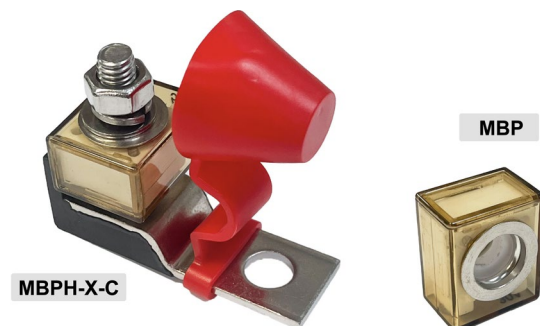
BLADE FUSE BLOCKS



Available with ratings up to 80VDC
Consolidate up to 12 circuits
With clear, insulating cover
LED blown fuse indicator available
Split Bus to combine switched & unswitched circuits
With built-in ground bus option
New Modular Design to create 4 different fuse blocks with only 2 parts

BATTERY PROTECTION FUSES

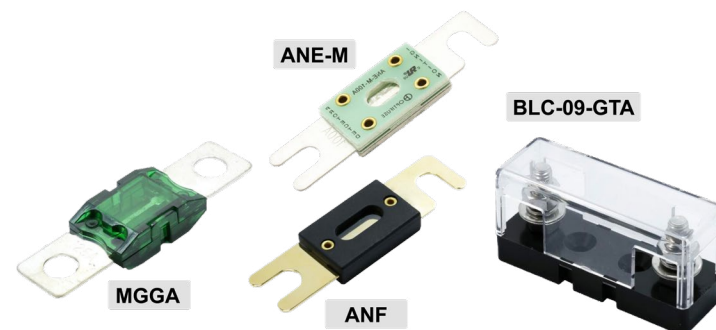
SE IP₆₇
J1171



Waterproof (IP 67) and Ignition Protected
30A-300A
Amperage color coding available
Mounted with Single and Double Bar fuse holders
High interrupting rating for main circuit protection on large battery banks

BOLT-ON FUSES

c_{RU} US SE
J1171



Ignition Protected options
For Heavy-Duty loads up to 800A
High Voltage available: 58VDC, 125VDC
Compact fuses for main or branch circuit protection
Amperage color coding available
Fuse blocks with insulating cover available

IN-LINE FUSE HOLDERS

IP₆₅ IP₆₇



Up to 125VDC/250VAC ideal for applications requiring high voltage blade fuses
With protective cover up to IP 67
LED blown fuse indicator available
Various wire gauge, length and colors options
Ask us about our customization capabilities

EMERGENCY FUSE KIT



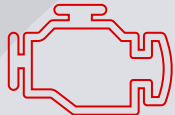
Ensures compliance with the Federal Motor Carrier Safety Regulations (FMCSR)
Ask us about other retail packaging options including assortment packs and kits
Customizable storefront Plan-O-Gram (POG) options and Point of Purchase displays also available

DC
Power

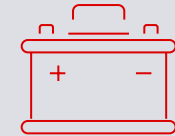
EMERGENCY VEHICLE DC ELECTRICAL SYSTEM

OPTIFUSE & SWITCH COMPONENTS

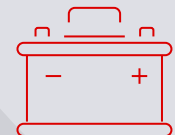
DC
Loads



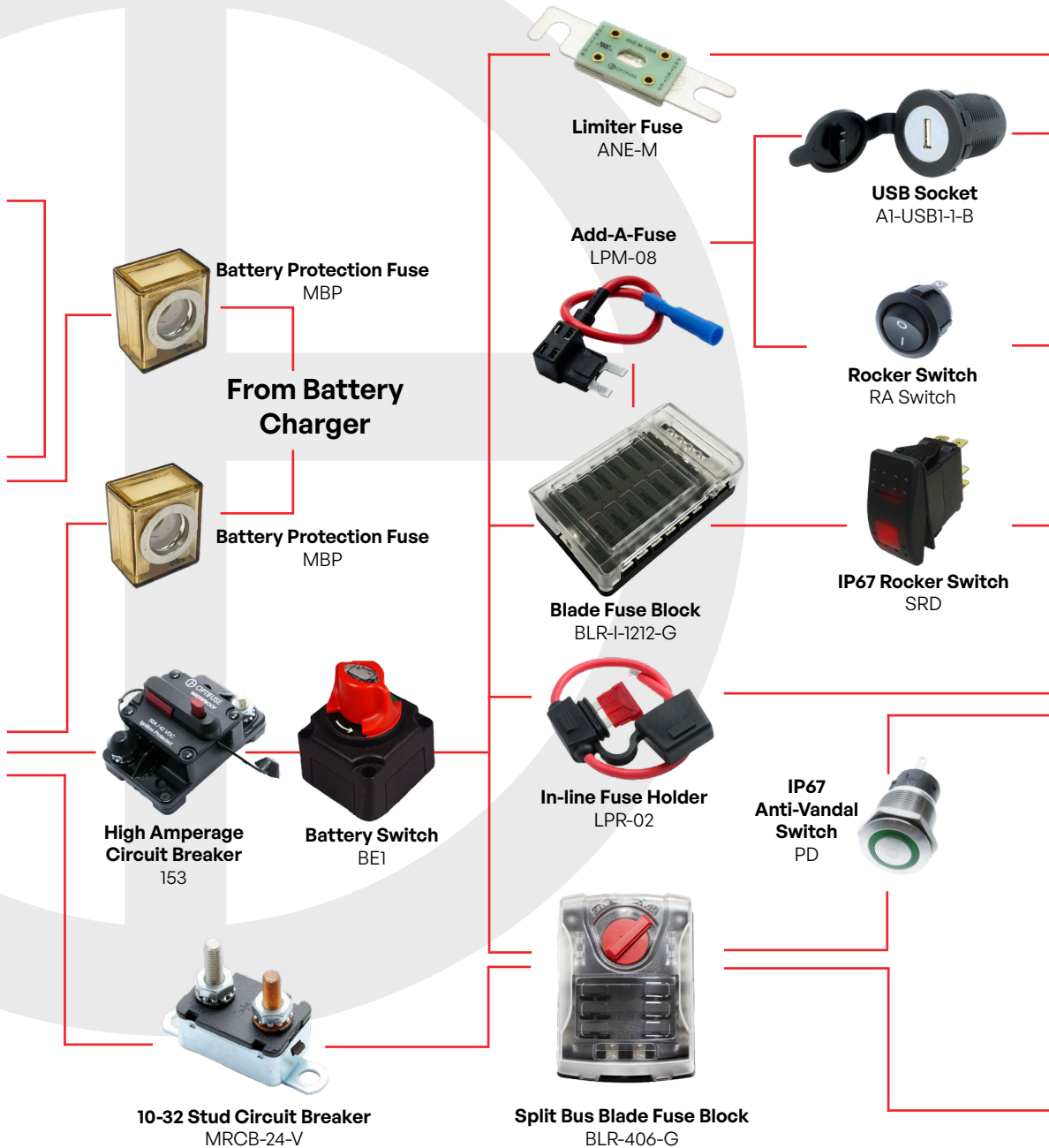
Engine



Start
Battery



Electronics
Battery



Switch
Circuits



Stereo



Lights



Cellphone



Camera



Hand-Held
Radio



Radio



MDC

24hr
Circuits



Siren



Clock



Alarm

*The diagram above is for reference only. Please consult a professional when setting up your electrical system.

July 2024 | OPTI-F-005-03



www.switchcomp.com