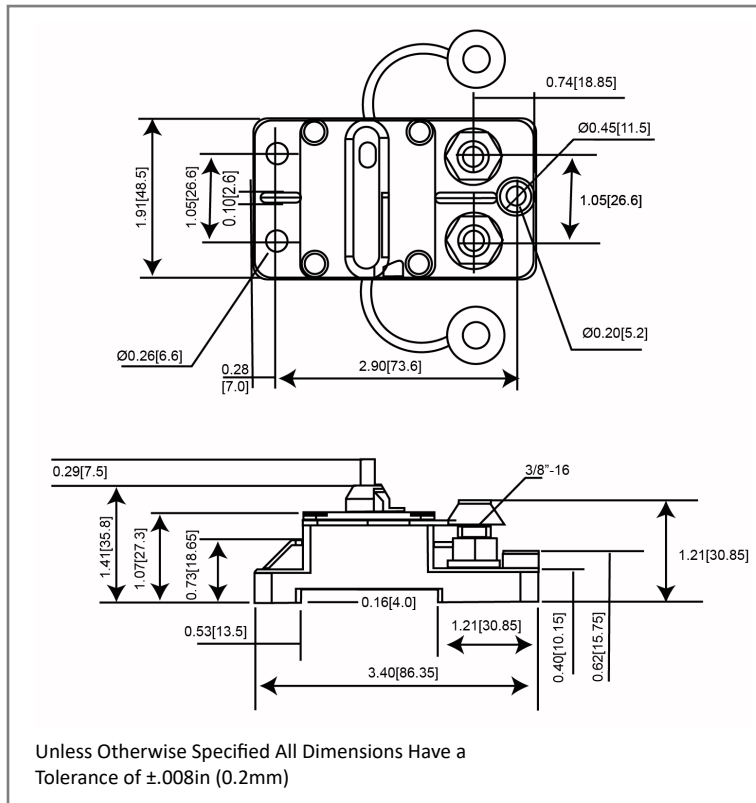


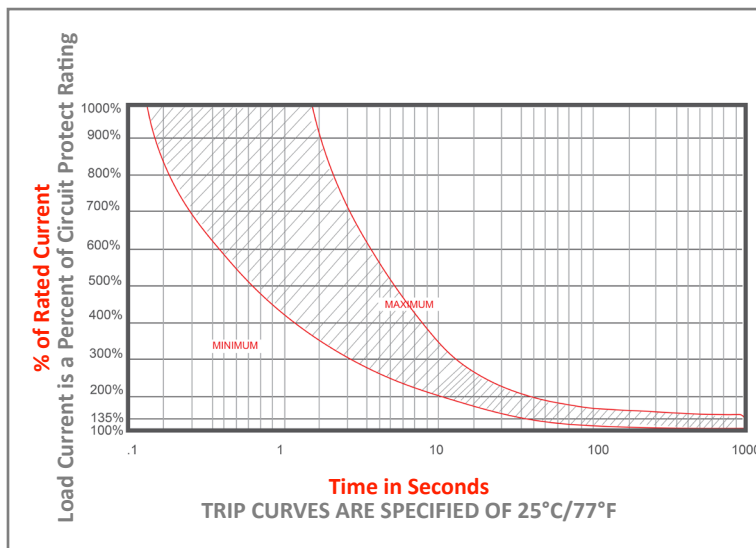
Mechanical Dimensions: Inches [mm]



Part Numbers Information

Optifuse P/N	Current
553025	25A
553030	30A
553040	40A
553050	50A
553060	60A
553070	70A
553080	80A
553090	90A
553100	100A
553120	120A
553135	135A
553140	140A
553150	150A
553175	175A
553200	200A
553250	250A
553300	300A

Time vs. Percent of Rated Current



% of Rated Current	Min Hold Time	Max Hold Time
100%	No Trip (≥ 30 Minutes)	
135%	50s	30m
200%	12s	45s
300%	3.5s	15s

Trip time: Ambient temperature 25°C ± 3°C
 *Trip time information is only for models up to 200A. For information regarding 250A and 300A models please contact the factory.

Electrical Specifications

Voltage Rating	48VDC
Reset Type	Type III - Manual Reset
Interrupting Rating	3000A @ 30VDC (25A-150A), 1500A @ 30VDC (175A-300A) (ABYC E-11)
Operation Temperature	-25 °F ~ 180 °F -32 °C ~ 82 °C
Testing	SAE J553, ABYC-E11

Material Specifications

In-Line Heavy Duty High Amp - Waterproof Circuit Breaker	
Body Material	Thermoset Plastic (UL94V-0)
Terminals Material	Nickel Plated
Terminals Configuration	3/8"-16 Stud
Mounting Type	Surface Mount
Studs Torque	30.5 N.m max.
Mounting Torque	~24 N-m MAX
Ignition Protected	SAE J1171
Ingress Protection	IP67

High Amperage Heavy Duty Circuit Breaker

553



Rev **Date of issue** **Revision Notes**

Designed **Approved**

Rev	Date of issue	Revision Notes	Designed	Approved
G	08-20-2024	Added Trip Time Note	RC	OF