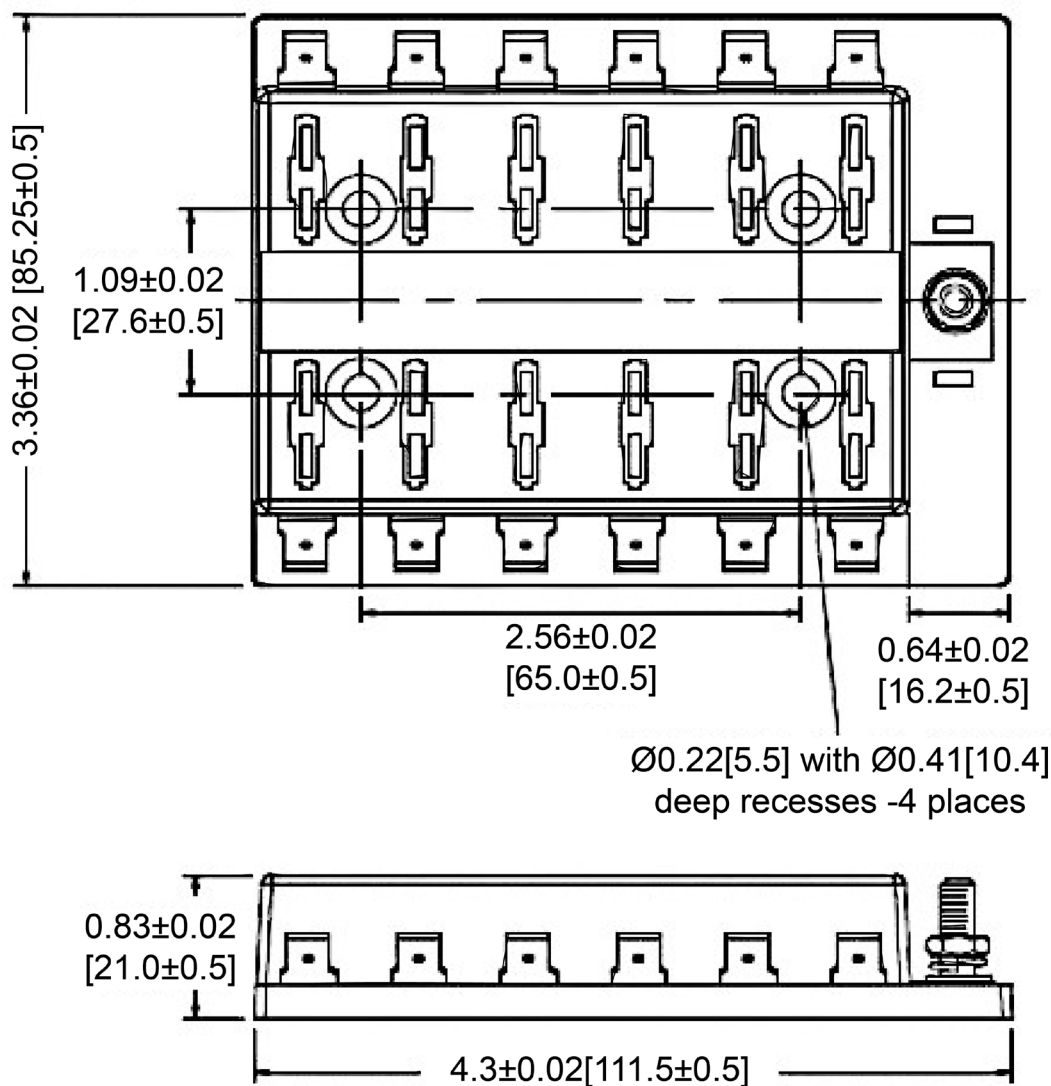


Mechanical Dimensions: Inches [mm]

Tolerances ± 0.012 [0.3] Unless Otherwise Specified

Electrical Specifications

Voltage Rating 32VDC

Current Rating
(Combined Circuits) 100A

Current Rating (Max Input) 25A

Line Side Connection #10-32 Studs

Load Side Connection 0.25" Quick Connect

Material Specifications

12 Circuits

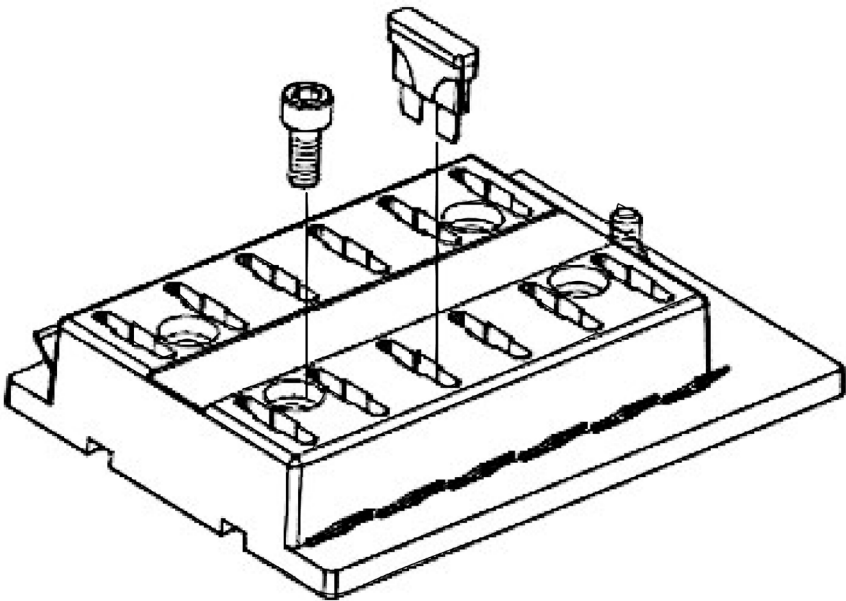
Body Material Polycarbonate (UL94V-2)

Terminal Material Copper (Tin Plated)

Accepts Regular (ATO/ATC Style) Blade Fuses

For cover please ask us about our BLC-112-C

Isometric View



Rev	Date of issue	Revision Notes	Designed	Approved
C	07-09-2024	Updated to new style; Corrected combined circuit rating	RC	OF