

Type BLC-209

Fuse Block

ANE / ANF Limiter Fuses



www.optifuse.com

(619) 593-5050

Specifications:

Voltage Rating: 125VAC, 80VDC

Max Current Rating: 800A

Fuse Type: ANE / ANF Limiter Fuse

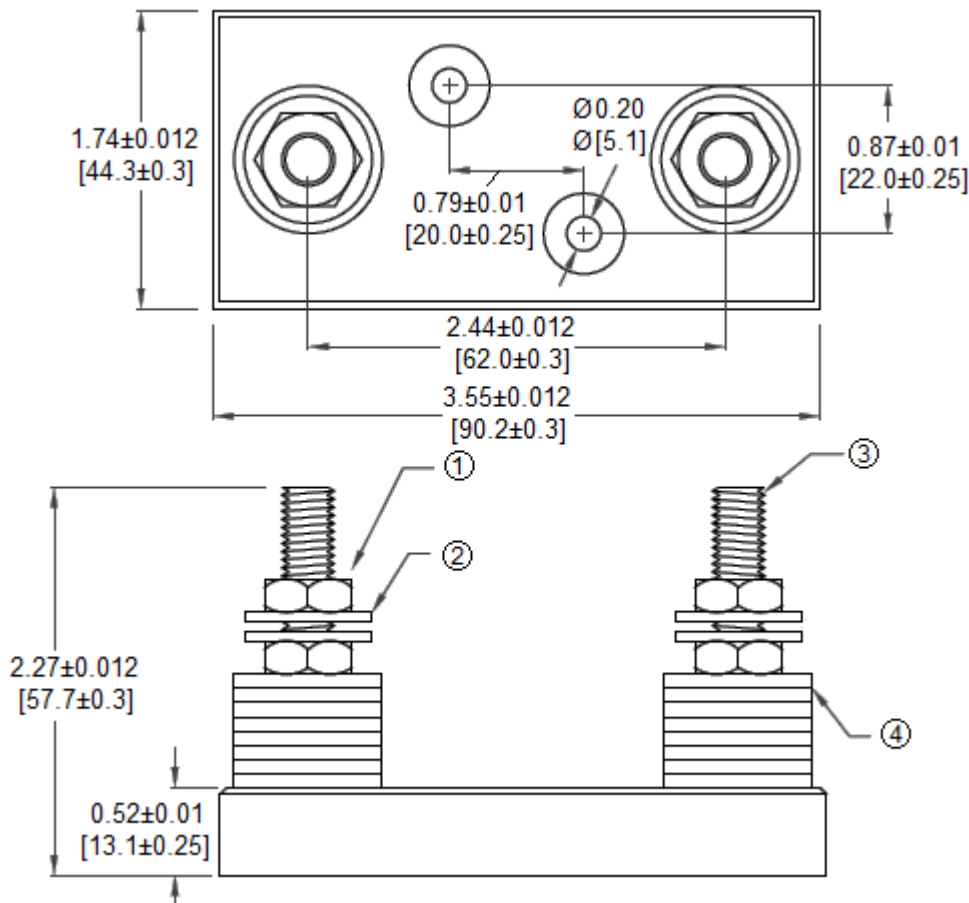
Base: Phenolic Laminate, Flame Retarding

Terminals: Brass

Hardware Specifications

| Item | Qty | Description |
|------|-----|-----------------------|
| 1 | 4 | M8 Hex Nut |
| 2 | 4 | Flat washer |
| 3 | 2 | M8 x L50 Bolt |
| 4 | 16 | Phenolic Resin washer |

Mechanical Dimensions: Inches [mm]



Warning:



-Operation beyond the specified maximum ratings or improper use may result in damage and possible electrical arcing and/or flame.

-Avoid contact of device with chemical solvent. Prolonged contact may damage the device performance.

Note: All specifications subject to change without notice.

Rev C 03/2019 - Page: 1/1
Code G02-01H

Type BLC-C

Fuse Block Cover

ANE / ANF Limiter Fuses



www.optifuse.com

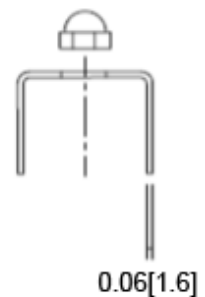
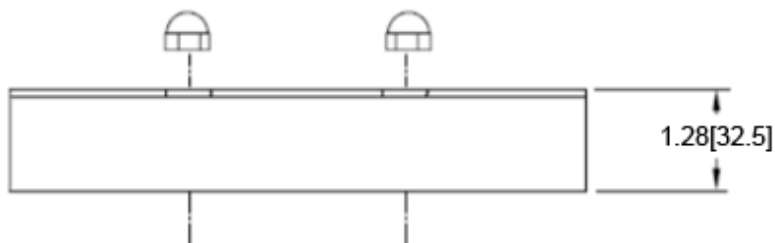
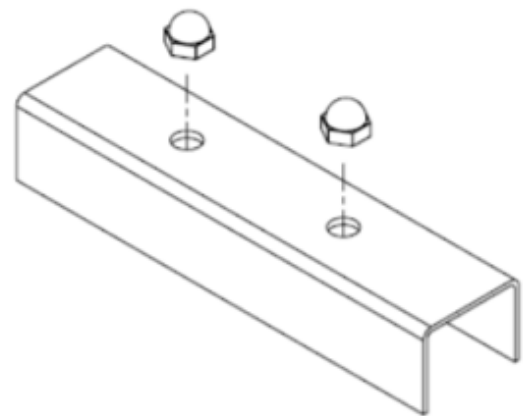
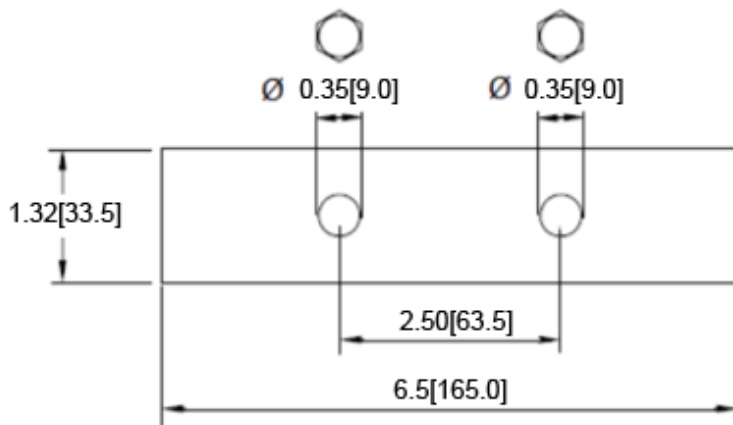
(619) 593-5050

Specifications:

Cover: Lexan (Clear)

Acorn Nuts: Plastic

Mechanical Dimensions: Inches [mm]



Warning:



-Operation beyond the specified maximum ratings or improper use may result in damage and possible electrical arcing and/or flame.

-Avoid contact of device with chemical solvent. Prolonged contact will damage the device performance.