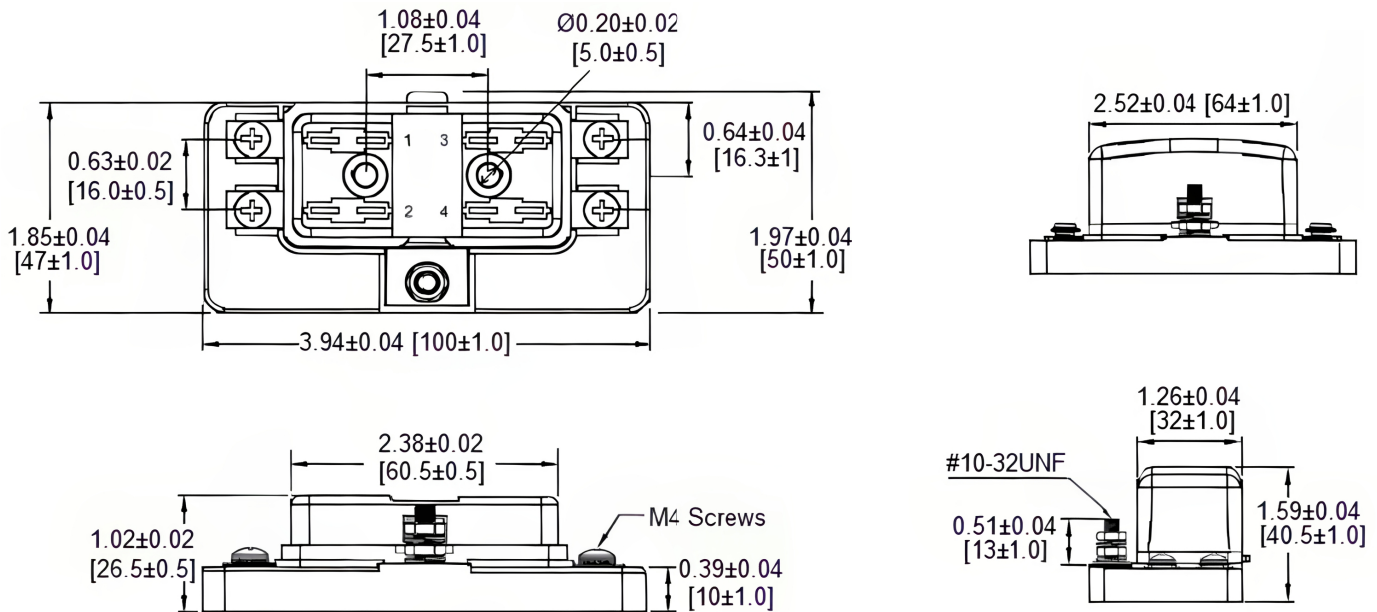
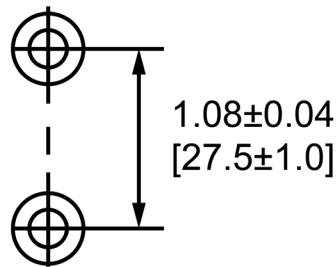


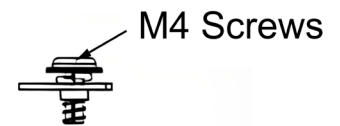
Mechanical Dimensions: Inches [mm]

Tolerances ± 0.012 [0.3] Unless Otherwise Specified

Mounting Holes



Terminal Dimensions



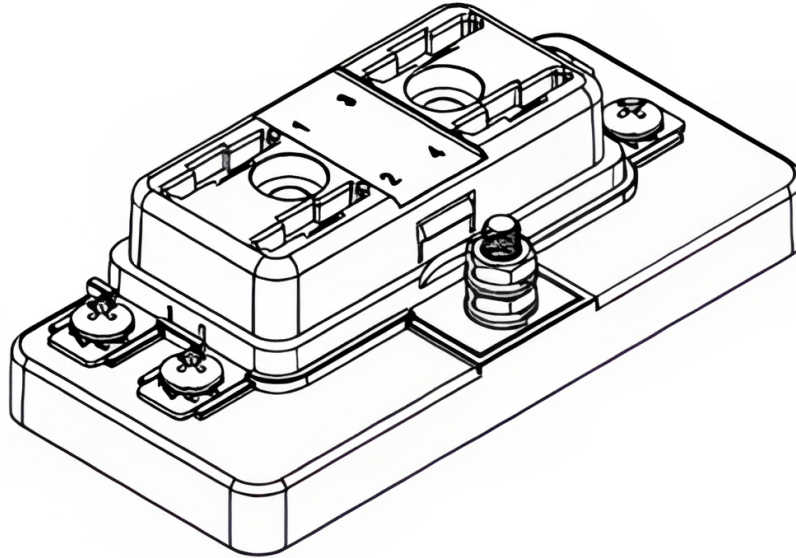
Electrical Specifications

Voltage Rating	32VDC
Current Rating (Combined Circuits)	100A
Current Rating (Each Circuit)	30A
Temperature Rating	-20°C ~ 85°C
Load Side Connection	#10-32 Threaded Stud
Line Side Connection	M4 Screw Terminals

Material Specifications

4 Circuits	
Accepts Regular (ATO/ATC Style) Blade Fuses	
Body Material	Black PBT (UL94V-0)
Cover Material	Transparent PC (UL94V-2)
Button Material	White POM
Terminal Material	Copper, Tin Plated
Stud Torque	20 in-lb [2.25Nm] max.
Terminal Torque	8 in-lb [0.9Nm] max.
Mounting Torque	20kgf max.

Isometric View



Rev **Date of issue** **Revision Notes**

Designed **Approved**

C	09-16-2024	Initial Drawing	RC	OF
---	------------	-----------------	----	----