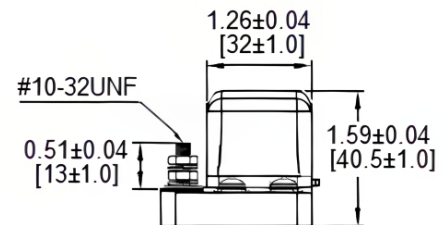
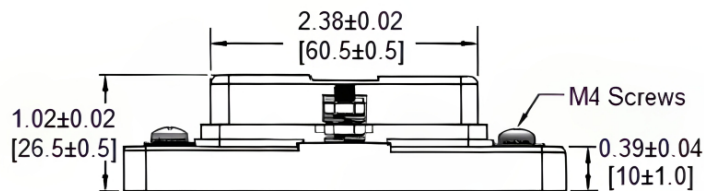
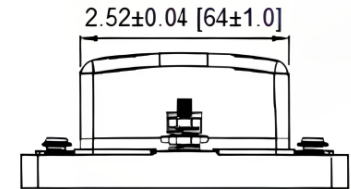
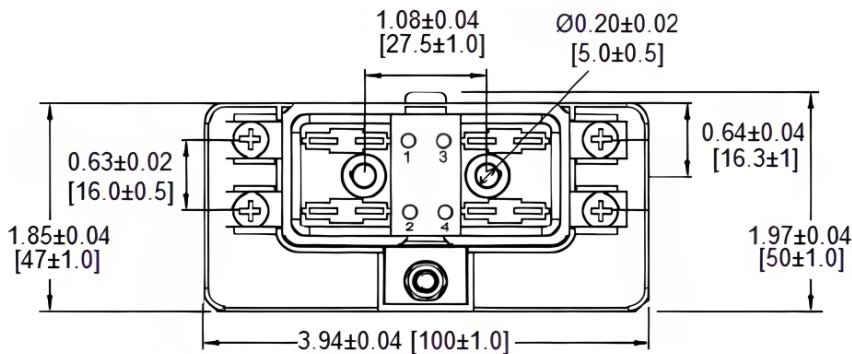
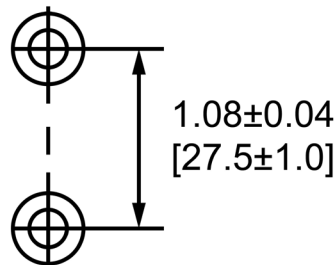


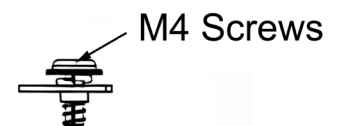
## Mechanical Dimensions: Inches [mm]

Tolerances  $\pm 0.012$  [0.3] Unless Otherwise Specified

## Mounting Holes



## Terminal Dimensions



## Electrical Specifications

Voltage Rating	32VDC
Current Rating (Combined Circuits)	100A
Current Rating (Each Circuit)	30A
Temperature Rating	-20°C ~ 85°C
Load Side Connection	#10-32 Threaded Stud
Line Side Connection	M4 Screw Terminals

## Material Specifications

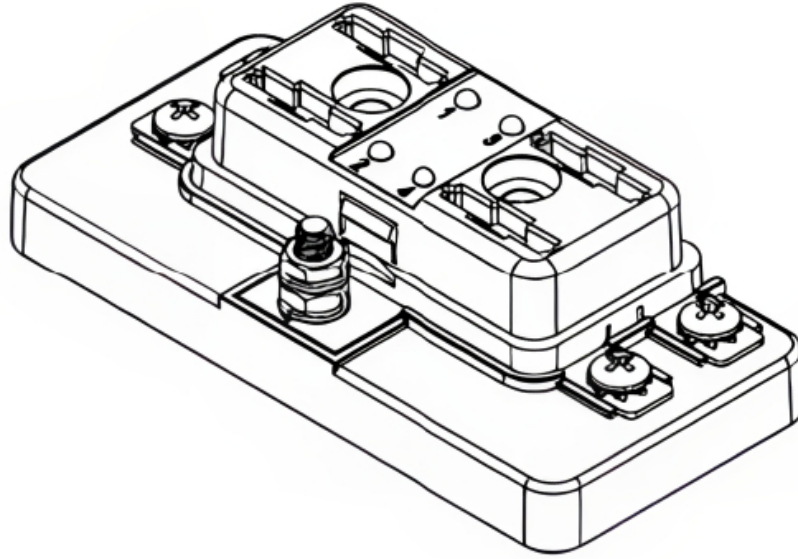
4 Circuits

Accepts Regular (ATO/ATC Style) Blade Fuses

LED Indication of Blown Fuse

<b>Body Material</b>	Black PBT (UL94V-0)
<b>Cover Material</b>	Transparent PC (UL94V-2)
<b>Button Material</b>	White POM
<b>Terminal Material</b>	Copper, Tin Plated
<b>Stud Torque</b>	20 in-lb [2.25Nm] max.
<b>Terminal Material</b>	8 in-lb [0.9Nm] max.
<b>Mounting Torque</b>	20kgf max.

Isometric View



Rev      Date of issue      Revision Notes

Designed      Approved

C	09-16-2024	Initial Drawing	RC	OF
---	------------	-----------------	----	----