

# Type CNR-01-I

## PC Board Type Fuse Clip

### Standard Auto Blade Fuses



www.optifuse.com (619) 593-5050

#### Specifications:

Voltage Rating: 500V AC / 250V DC

Amperage Rating: See Chart

Body Material: See Chart

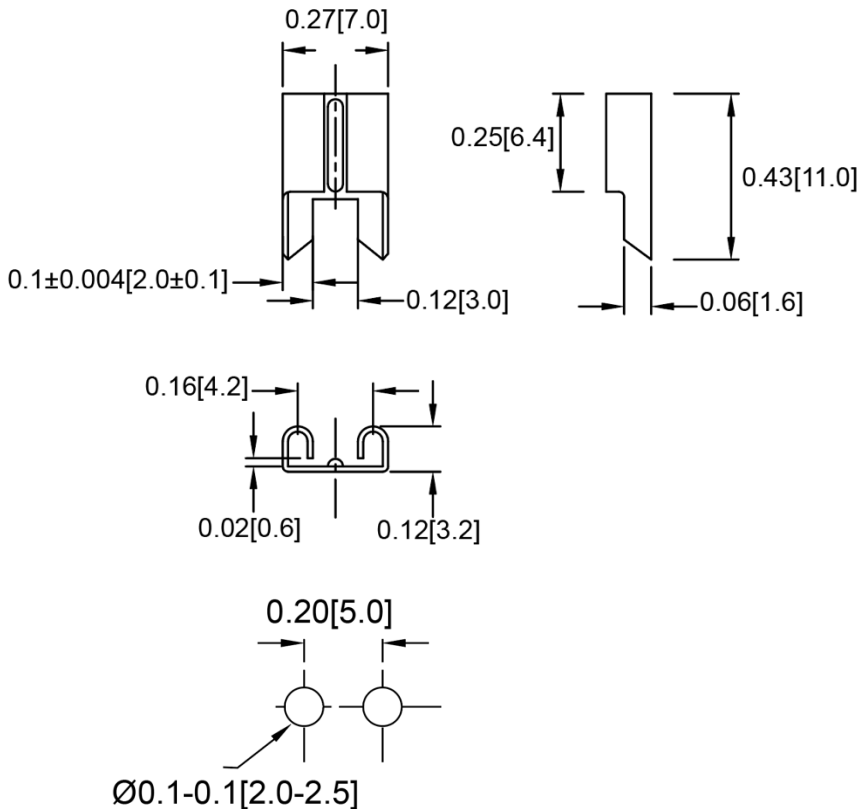
Finish: Bright Tin-plated

(For Matte Tin-plated add -CE at end of part number ...ie. CNR-01-I-PCU-CE)

For use with Type **APR, ANR** Fuses (Standard-Auto Blade Type)

| Part number:         | Material         | Amperage Rating |
|----------------------|------------------|-----------------|
| <b>CNR-01-I</b>      | Spring Bronze    | 15A Max.        |
| <b>CNR-01-I-PCU</b>  | Phosphor Bronze  | 20A Max.        |
| <b>CNR-01-I-BECU</b> | Beryllium Bronze | 40A Max.        |

#### Mechanical Dimensions: Inches [mm]



#### Warning:



-Operation beyond the specified maximum ratings or improper use may result in damage and possible electrical arcing and/or flame.

-Avoid contact of device with chemical solvent. Prolonged contact will damage the device performance.