

# Type CSG-01

## Fuse Clip – with End Stops

### 13/32” (10.3mm) Diameter Fuses



www.optifuse.com

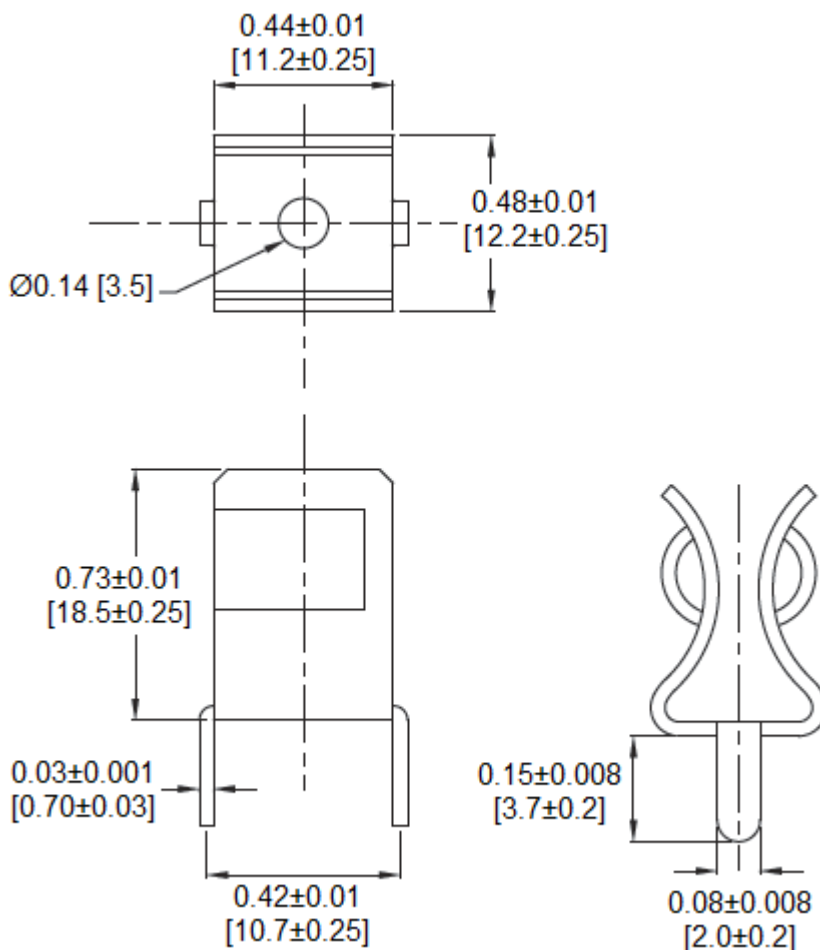
(619) 593-5050

#### Specifications:

Rating: 30A, 250V AC  
Body Material: Spring Brass  
Finish: Bright Tin Plated  
Fuse Clip Type: With End Stops

For use with 13/32” (10.3mm) Diameter Fuses

#### Mechanical Dimensions: Inches [mm]



#### Warning:



- Operation beyond the specified maximum ratings or improper use may result in damage and possible electrical arcing and/or flame.
- Avoid contact of device with chemical solvent. Prolonged contact may damage the device performance.
- Not designed for prolonged liquid exposure or submersible applications.

Note: All specifications subject to change without notice.

Rev C 09/2015 - Page: 1/1  
Code G02-01H

# Type CSG-01-HD

## Fuse Clip – with End Stops

### 13/32” (10.3mm) Diameter Fuses



www.optifuse.com

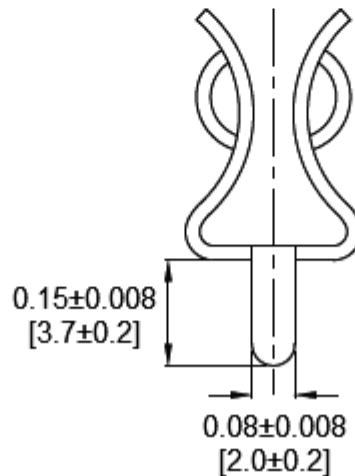
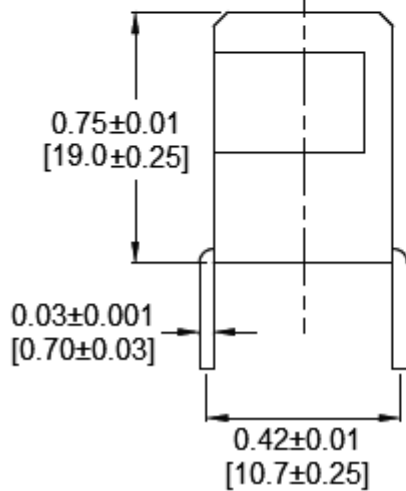
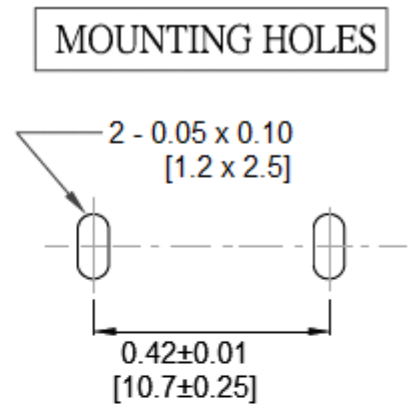
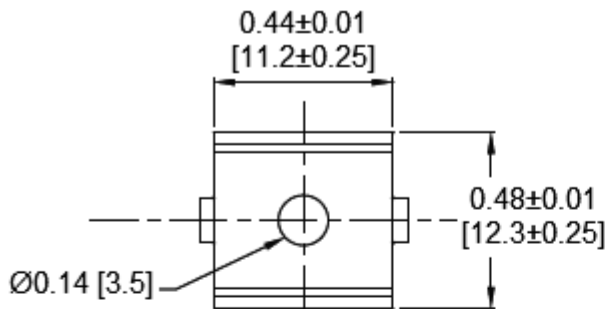
(619) 593-5050

#### Specifications:

Rating: 40A, 250V AC  
 Body Material: Phosphor Bronze  
 Finish: Bright Tin Plated  
 Fuse Clip Type: With End Stops

For use with 13/32” (10.3mm) Diameter Fuses

#### Mechanical Dimensions: Inches [mm]



#### Warning:



-Operation beyond the specified maximum ratings or improper use may result in damage and possible electrical arcing and/or flame.  
 -Avoid contact of device with chemical solvent. Prolonged contact may damage the device performance.  
 -Not designed for prolonged liquid exposure or submersible applications.

Note: All specifications subject to change without notice.

Rev A 09/2015 - Page: 1/1  
 Code G02-01H