

Type LPA-04 In-Line Fuse Holder 1/4" x 1 1/4" (6 LPA-04.3 x 30mm) Fuses



www.optifuse.com

(619) 593-5050

Ratings:

Fuse Type: 1/4" x 1 1/4" (6.3 x 30mm or 6.3 x 32mm)

Electrical Rating: 32VDC

Body: Nylon

Contacts: Brass

Standard Size: #14-#18 AWG

*Available pre-inserted wire sizes shown in table

Part number format

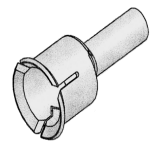
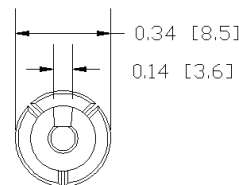
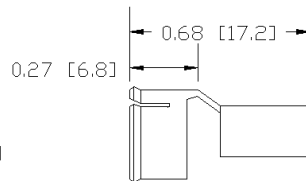
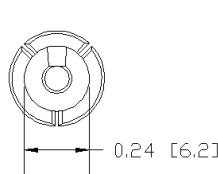
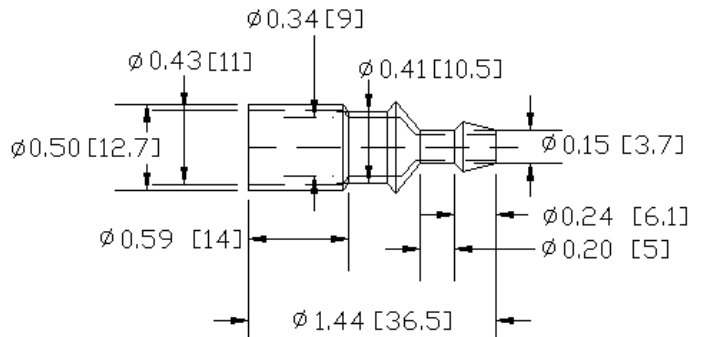
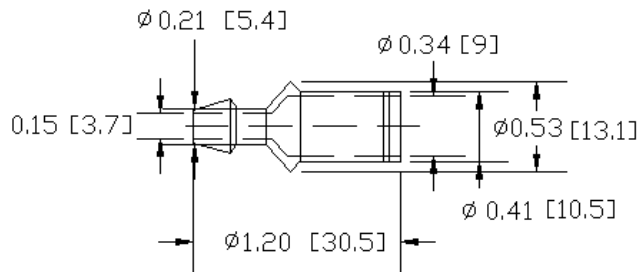
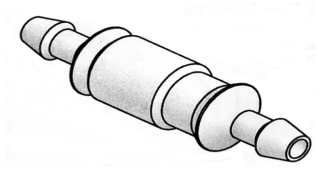
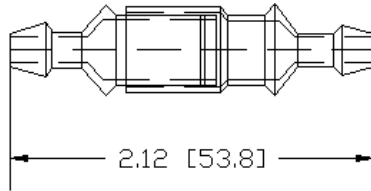
LPA-04Y No Wire (Standard)

LPA-04Y-##R

Where ## is optional pre-inserted wire gauge

Wire Gauge	Max. Amperage
12 AWG	30 A
14 AWG	20 A
16 AWG	15 A
18 AWG	10 A
20 AWG	7.5 A

Mechanical Dimensions: Inches [mm]



Warning:



- Operation beyond the specified maximum ratings or improper use may result in damage and possible electrical arcing and/or flame.
- Avoid contact of device with chemical solvent. Prolonged contact will damage the device performance.
- Not designed for prolonged liquid exposure or submersible applications.